

Steps to Healthier Homes

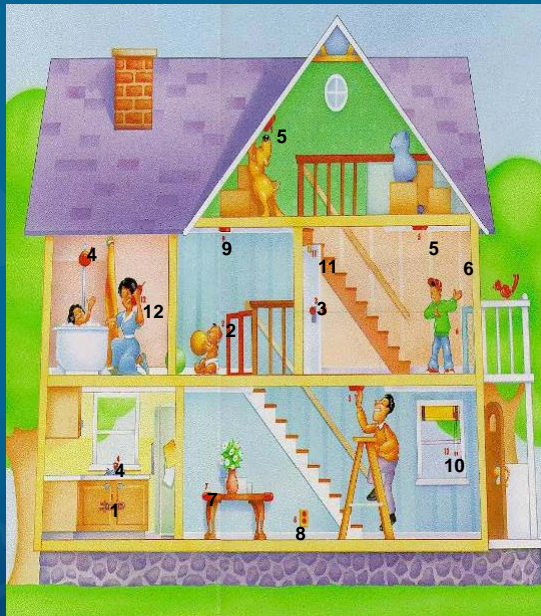
- Start with People
- House as a System
- Keep It:
 - Dry
 - Pest-Free
 - Safe**
 - Maintained
- Making it Work
 - Clean
 - Ventilated
 - Contaminant-Free



National Center for Healthy Housing
Healthy Homes Training Center

1

Keep it Safe:
There are
many ways
to be injured
in the home

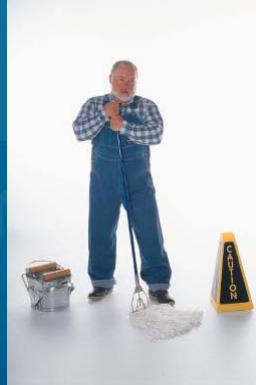


National Center for Healthy Housing
Healthy Homes Training Center

2

Are Injuries Accidents?

Injury is the leading cause of death and disability among children and young adults [2]



Accidents are events that happen completely by chance, with no planning or deliberate intent. Injuries are preventable: they do not occur at random.



National Center for Healthy Housing
Healthy Homes Training Center

3

Safety-Related Housing Issues

- Holes big enough to trip on
 - 1.0% of homes have holes in floors
 - 2.5% in mobile homes
 - 2.7% for residents below poverty level
- Electrical Wiring
 - 1.0% have exposed wiring
 - 1,3% have rooms without electric outlets
 - 9.1% have blown fuses or breakers in last 3 months

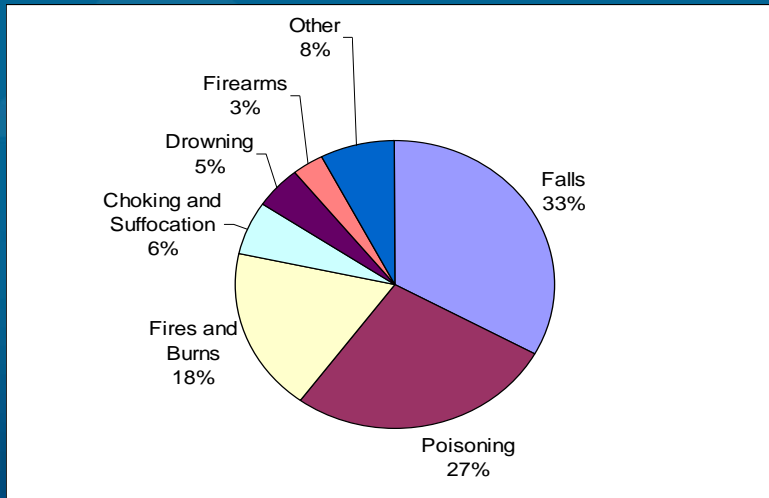
From American Housing Survey – 2007



National Center for Healthy Housing
Healthy Homes Training Center

4

What are the most common causes of home injury deaths?



National Center for Healthy Housing
Healthy Homes Training Center

5

Which age groups are most susceptible?

Falls are leading cause of nonfatal home injury for children from birth through 14 and for older population.



Adults 80+ years of age are at **20** times higher risk for death from injury than younger individuals.

The highest rate of injury death for infants is from **choking and suffocation**.



Highest rate of injury death for 1-14 year olds is **fires and burns**.



National Center for Healthy Housing
Healthy Homes Training Center

6

Where do kids play?



National Center for Healthy Housing
Healthy Homes Training Center

7



National Center for Healthy Housing
Healthy Homes Training Center

8

What do they land on?



National Center for Healthy Housing
Healthy Homes Training Center

9

A composite image. The top left shows a wooden post and beam structure with a chain hanging from it. The bottom right is a close-up of weathered wooden planks with sharp edges and splinters. The background is a solid blue color.

Sharp edges
Splinters



National Center for Healthy Housing
Healthy Homes Training Center

10

Window Safety Guard



Safety Glass?



National Center for Healthy Housing
Healthy Homes Training Center

11

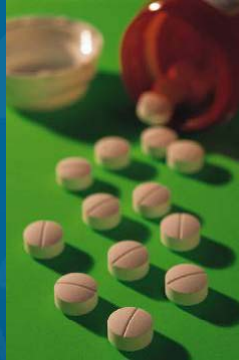
Hand rails where needed?



National Center for Healthy Housing
Healthy Homes Training Center

12

Poisoning



- 82% of households keep medicines in unlocked drawers or cabinets.
- 69% of homes with young children store household chemicals in unlocked areas.



National Center for Healthy Housing
Healthy Homes Training Center

13



National Center for Healthy Housing
Healthy Homes Training Center

14

Labels

- Food, Drugs and Cosmetics
 - Food and Drug Administration
- Pesticides
 - Environmental Protection Agency
- Other Products Containing Hazardous Substances
 - Consumer Products Safety Commission (CPSC)
- Material Safety Data Sheets (MSDS)
 - Occupational Safety and Health Administration



National Center for Healthy Housing
Healthy Homes Training Center

15



What's under the sink?

**Warning, Caution,
Danger**



National Center for Healthy Housing
Healthy Homes Training Center

16

CPSC Principal Display Panel

- Signal word
 - CAUTION
 - WARNING
 - DANGER
 - POISON
- Affirmative statement of principal hazard
 - ex: HARMFUL IF SWALLOWED, FLAMMABLE, IRRITANT, CORROSIVE
- Statement to read other cautions on another panel if all labeling is not on Principal Display Panel



National Center for Healthy Housing
Healthy Homes Training Center

17

Danger

“Danger” Signal Word Required if:

- Highly Toxic
- Corrosive
- Extremely Flammable



National Center for Healthy Housing
Healthy Homes Training Center

18

Corrosive v. Irritant

- **Corrosive:** Destroys living tissue such as skin or eyes by chemical action.
- **Irritant:** Not corrosive and causes a substantial injury to the area of the body that it comes in contact with. Irritation can occur after immediate, prolonged, or repeated contact.

Many liquid products cause irritation.
Avoid products that are corrosive.



National Center for Healthy Housing
Healthy Homes Training Center

19

Flammable v. Combustible

- **Flash Point:** Temperature where liquid will support a flame.
- **Extremely Flammable:** Flash Point is 20°F or less
- **Flammable:** Flash point between 20°F and 100°F
- **Combustible:** Flash point between 100°F and 150°F

Flammables start fires.
Combustibles feed fires once started.
If you need to choose, pick a combustible.



National Center for Healthy Housing
Healthy Homes Training Center

20

EPA Pesticide Product Label

- Product Name
- Ingredients
 - Active
 - Inert / Other
- “Keep Out of Reach of Children”
- Signal Work - Poison / Danger / Warning / Caution
- First Aid
- If Poison, then skull and crossbones
- Net contents.

Active ingredient Boric Acid.....	40%
Inert Ingredients.....	60%
Total	100%

ORIGINAL FORMULA WITH ADDED LURE

KILLS ROACHES
WATERBUGS, AND SILVERFISH!

CAUTION
KEEP OUT OF REACH OF CHILDREN.
SEE SIDE / BACK PANEL FOR FIRST AID
AND ADDITIONAL PRECAUTIONARY STATEMENTS

NET WT. 2OZ. (56g)

EPA Registration Number is Key



National Center for Healthy Housing
Healthy Homes Training Center

21

- Well labeled bottles
- Easy to identify
- Store hazardous materials in secure location



National Center for Healthy Housing
Healthy Homes Training Center

22



What about bug spray?



National Center for Healthy Housing
Healthy Homes Training Center

23

Arts and Craft Materials



National Center for Healthy Housing
Healthy Homes Training Center

24

Spoiled Food

- Refrigerator - 40 degrees F
- Freezer - 0 degrees F



National Center for Healthy Housing
Healthy Homes Training Center

25

Fires and Burns



75% of households did not know the temperature setting on their water heaters.

91% were unaware of the temperature of hot tap water.



National Center for Healthy Housing
Healthy Homes Training Center

26



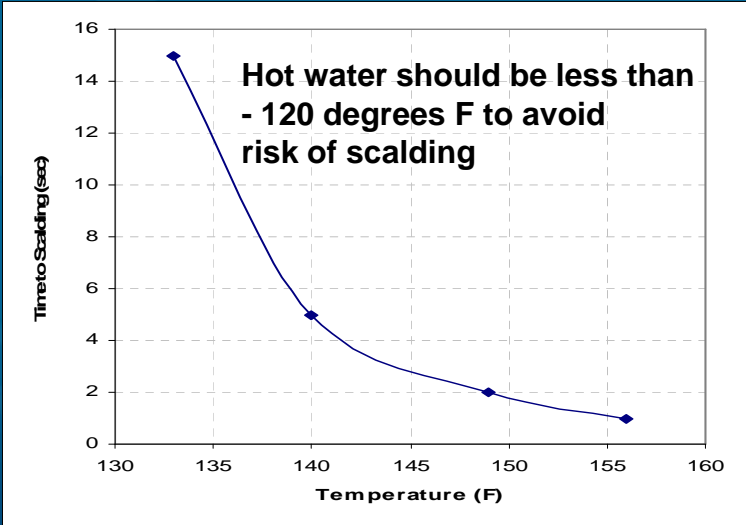
- Smoke Alarm
- CO Alarm
- Fire Extinguishers




 **National Center for Healthy Housing**
Healthy Homes Training Center

27

Scalding



Temperature (F)	Time to Scalding (sec)
133	15
140	5
148	2
155	1

 **National Center for Healthy Housing**
Healthy Homes Training Center

28

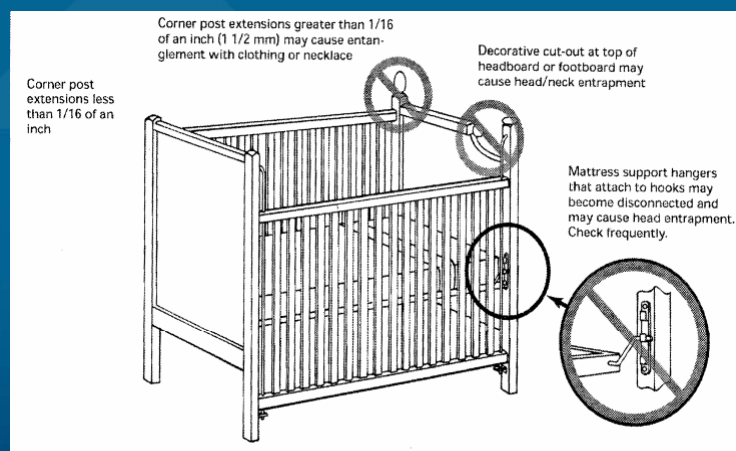
Choking and Suffocation



National Center for Healthy Housing
Healthy Homes Training Center

29

Crib Safety



National Center for Healthy Housing
Healthy Homes Training Center

30

Choke hazards?



Electric shock hazard?



National Center for Healthy Housing
Healthy Homes Training Center

31

Drowning



National Center for Healthy Housing
Healthy Homes Training Center

32

Firearms



Trigger
locks and
secured
storage

Store ammunition separate
from weapon



National Center for Healthy Housing
Healthy Homes Training Center

33

IPMC Sections Related to Safety

- **304.10 Stairways, decks, porches and balconies.** Every exterior stairway, deck, porch and balcony, and all appurtenances attached thereto, shall be maintained structurally sound, in good repair, with proper anchorage and capable of supporting the imposed loads.
- **304.13 Window, skylight and door frames.** Every window, skylight, door and frame shall be kept in sound condition, good repair and weather tight.
- **304.18 Building security.** Doors, windows or hatchways for dwelling units, room units or housekeeping units shall be provided with devices designed to provide security for the occupants and property within.
- **304.18.2 Windows.** Operable windows located in whole or in part within 6 feet (1828 mm) above ground level or a walking surface below that provide access to a dwelling unit, rooming unit or housekeeping unit that is rented, leased or let shall be equipped with a windowsash locking devices.
- **305.2 Structural members.** All structural members shall be maintained structurally sound, and be capable of supporting the imposed loads.



National Center for Healthy Housing
Healthy Homes Training Center

34

IPMC Sections Related to Safety

- **305.4 Stairs and walking surfaces.** Every stair, ramp, landing, balcony, porch, deck or other walking surface shall be maintained in sound condition and good repair.
- **305.5 Handrails and guards.** Every handrail and guard shall be firmly fastened and capable of supporting normally imposed loads and shall be maintained in good condition.
- **306.1 General.** Every exterior and interior flight of stairs having more than four risers shall have a handrail on one side of the stair and every open portion of a stair, landing, balcony, porch, deck, ramp or other walking surface which is more than 30 inches above the floor or grade below shall have guards. Handrails shall not be less than 30 inches high or more than 42 inches high measured vertically above the nosing of the tread or above the finished floor of the landing or walking surfaces. Guards shall not be less than 30 inches high above the floor of the landing, balcony, porch, deck, or ramp or other walking surface.
- **402.2 Common halls and stairways.** Every common hall and stairway in residential occupancies, other than in one- and two family dwellings, shall be lighted at all times with at least a 60-watt standard incandescent light bulb for each 200 square feet of floor area or equivalent illumination, provided that the spacing between lights shall not be greater than 30 feet.



IPMC Sections Related to Safety

- **604.2 Service.** The size and usage of appliances and equipment shall serve as a basis for determining the need for additional facilities in accordance with the ICC *Electrical Code*. Dwelling units shall be served by a three-wire, 120/240 volt, singlephase electrical service having a rating of not less than 60 amperes.
- **604.3 Electrical system hazards.** Where it is found that the electrical system in a structure constitutes a hazard to the occupants or the structure by reason of inadequate service, improper fusing, insufficient receptacle and lighting outlets, improper wiring or installation, deterioration or damage, or for similar reasons, the code official shall require the defects to be corrected to eliminate the hazard.
- **605.2 Receptacles.** Every habitable space in a dwelling shall contain at least two separate and remote receptacle outlets. Every laundry area shall contain at least one grounded-type receptacle or a receptacle with a ground fault circuit interrupter. Every bathroom shall contain at least one receptacle. Any new bathroom receptacle outlet shall have ground fault circuit interrupter protection.
- **605.3 Lighting fixtures.** Every public hall, interior stairway, toilet room, kitchen, bathroom, laundry room, boiler room and furnace room shall contain at least one electric lighting fixture.



Key Messages

- Injuries are not accidents. They are preventable.
- There are many simple and inexpensive ways to prevent home injuries.
- Children and older adults are more at risk for injuries in the home.
- Falls, poisoning, and fires/burns are the most common causes of injury deaths.



National Center for Healthy Housing
Healthy Homes Training Center

37

Learning Objectives

- Explain the difference between an injury and an accident.
- Name the 3 most common home injury related causes of death.
- Name five locations to look for safety hazards in the home.
- Name five ways to prevent home injuries.



National Center for Healthy Housing
Healthy Homes Training Center

38