

# Safe and Healthy Home Investment Partnerships

**HUD  
Office of  
Healthy  
Homes and  
Lead Hazard  
Control**

# What is HUD's Approach to Healthy Homes?

- Lead Hazard Control (Grants)
- Asthma and Allergen Reduction (Grants)
- Enforcement of Lead Safe Housing Rules
- Research and Development (Grants)
- Promotion of Best Practices and Support for Local Initiatives

# Lead Hazard Control

- Lead Hazard Control Grants.
- Lead Hazard Reduction Demonstration Grants
- Enforcement of Lead Safe Housing Regulations

# Asthma Triggers and Allergen Reduction

- Healthy Homes Production Grants
- Research and Development Technical Studies Grants

# Promotion of Best Practices

- Support for Green and Healthy Homes Initiative
- Support for Healthy Homes Training Programs
- Support for HUD Supported Housing Health Improvements
- Safe and Healthy Homes Initiative Partnerships (NEW!)

## What is SHHIP?

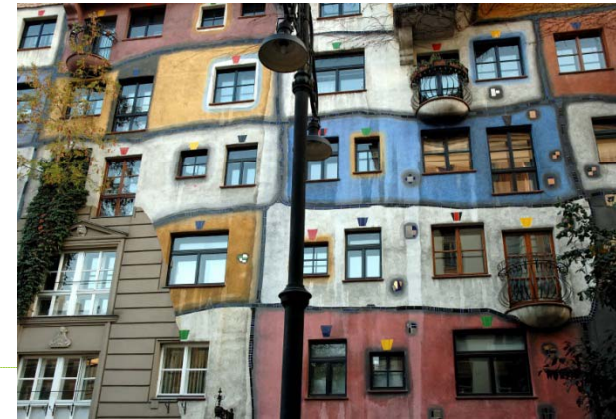
The Safe and Healthy Homes Investment Partnership (SHHIP) is a **federal certification** that recognizes local governments and their non-profit partners that are **working together** to provide **citizen centered building based** interventions.



# SHHIP Principals



Organizes around the needs of the citizens being served



## Working Together

Braids multiple service disciplines and funding streams

## Citizen Centered



## Building Based

Intervenes by making changes in the physical structure

# SHHIP Model

## Current Model



- Multiple targets based on program divisions
- Little cross program coordination
- Interventions limited by program requirements
- Gaps in Services

## SHHIP Model



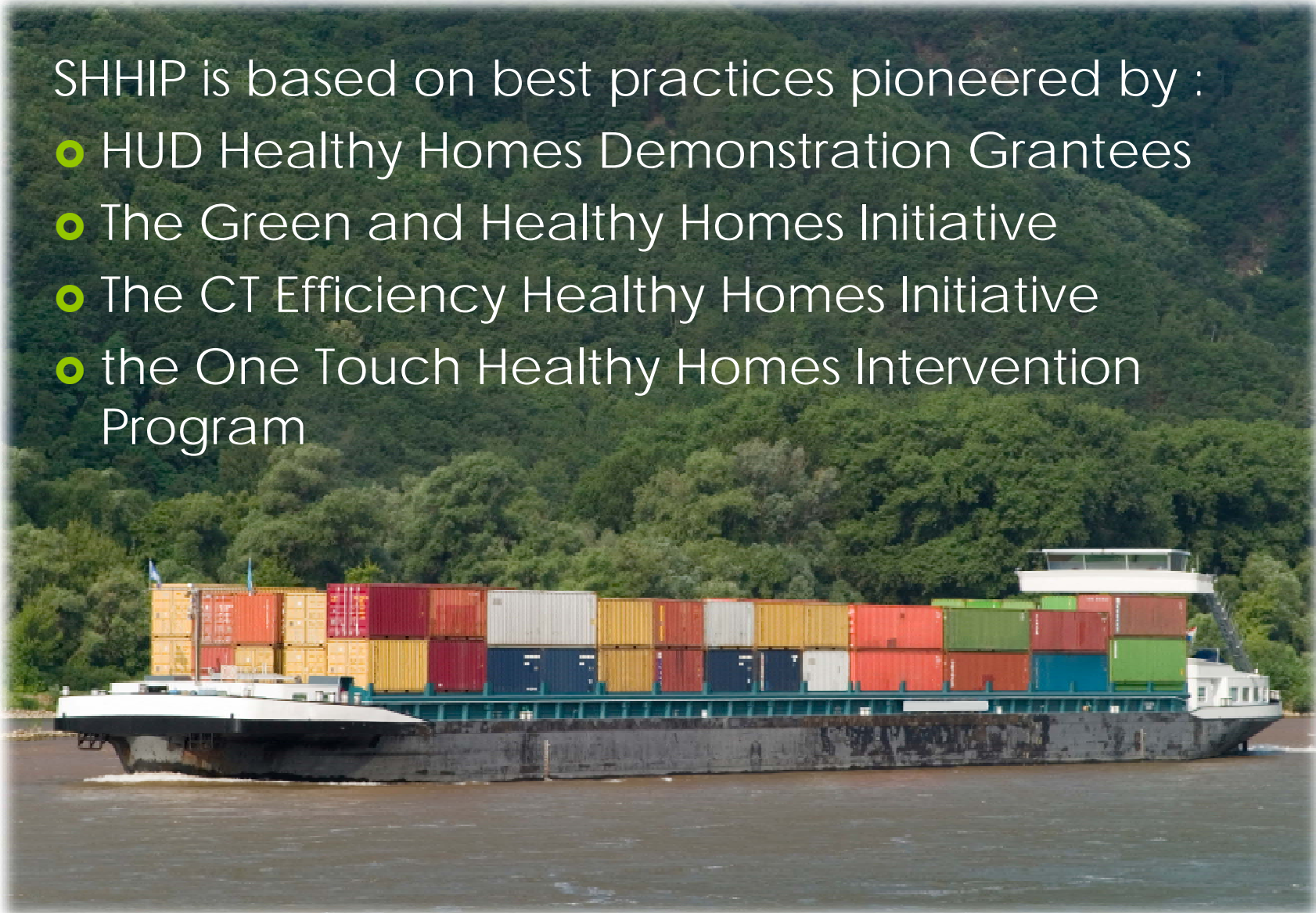
- Single target based on citizen need
- Major cross program coordination
- Interventions coordinated to meet resident needs
- No gaps in services




## SHHIP Model

SHHIP is based on best practices pioneered by :

- HUD Healthy Homes Demonstration Grantees
- The Green and Healthy Homes Initiative
- The CT Efficiency Healthy Homes Initiative
- the One Touch Healthy Homes Intervention Program



## SHHIP Model



The SHHIP brings these practices to scale through federal certification and NOFA points

# SHHIP Model

Because certification and funding opportunities are separate, the SHHIP enables any Federal Government program to offer NOFA points to SHHIP certified communities.

This enables the SHHIP to become a government wide vehicle for collaboration.



## SHHIP Requirements

A SHHIP Requires at least:

1 Local Government

1 Nonprofit Partner

Other Partners as Appropriate

A SHHIP must include partners who work in  
Housing Rehabilitation  
Energy Efficiency  
Healthy Homes

And, where available, include partners from the  
National and Local Foundation Community  
Other Building Based Disciplines as appropriate

# SHHIP Requirements

A SHHIP's mission must include:

- Improving the way services are delivered
- Improving the health outcomes of the community
- Improving the local workforce of healthy building professionals
- Improving housing in a way that is sustainable, healthy and safe

# SHHIP Requirements



A SHHIP's service methodology must include:

- Single citizen point of contact
- Utilize HUD Healthy Homes Rating Tool
- Support common multidisciplinary workforce training
- Report data in a standardized manner
- Provide service in a unified manner
- Identify and eliminate barriers to effective service delivery

## F.A.Q.

- What does SHHIP Certification get a community?
- What is the process for getting a SHHIP Certification
- Who reviews the applications for SHHIP Certification?
- What is your timeline for implementation?

