

Visual Assessment Photos
for *Healthy Homes Specialist*
Credential

see www.healthyhomestraining.org/credential/

Scenario

It is February. Jane Doe contacted you about checking her home for health hazards. Ms. Doe has had flu symptoms since the winter began. Two weeks ago, her four-year old daughter began coughing and wheezing. She rents a single-family home that was constructed in 1925 and remodeled in 1965. It uses a warm air furnace burning natural gas for heating.

On cold days, she makes a roast in the oven using a timer so she can have a good meal and take the chill off of the home while they eat. Fortunately, she makes quilts. They keep her and her daughter warm at night when the furnace cannot keep the home warm.

The nurse at Ms. Doe's doctor's office suggested she call you and ask for you to check her home. She lives at 10320 Little Patuxent Parkway, Unit 500, Columbia, MD 21044.

When you arrive, Ms. Doe explains that she has heard something making noise in the attic. She thinks she heard it behind the plaster wall. She says that no one smokes in the home.

Exterior – Front



Exterior – Side



Exterior – Back



Exterior – Window



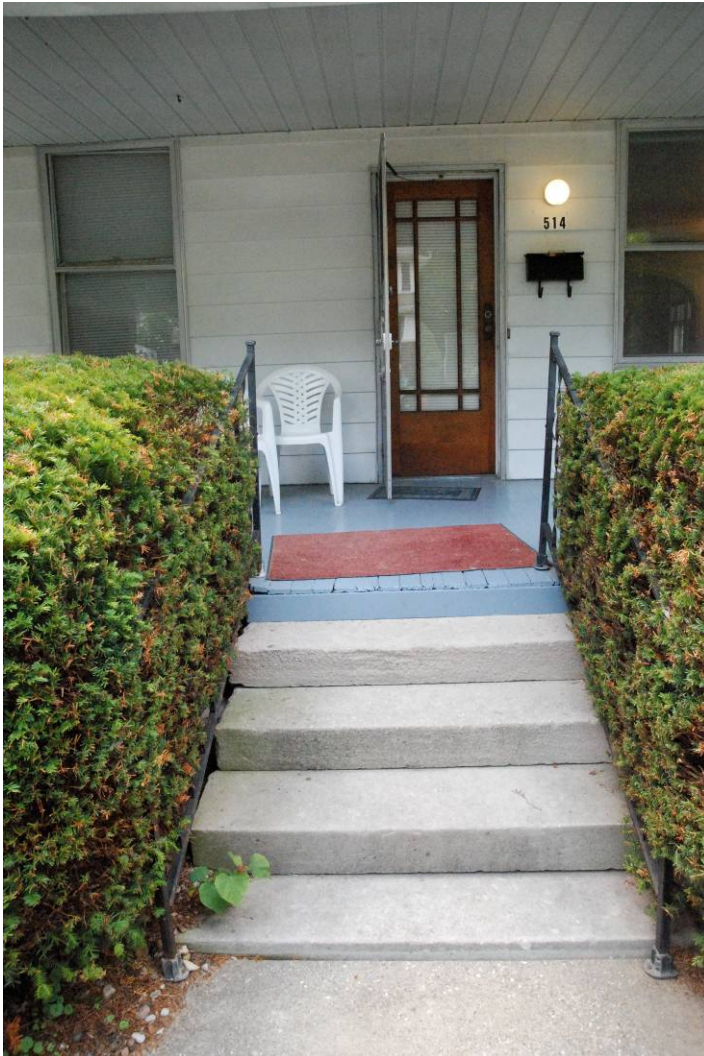
Exterior – Basement Window



Exterior - Eaves



Porch – From Yard



Porch - Window



Living Room - Main



Living Room – Window



Living Room – Window Sill



Dining Room



Kitchen – From Door



Kitchen – From Refrigerator



Kitchen – Under Sink



Bathroom – From Shower



Bathroom – Down Low



Bathroom – From Door



Basement – Stairs



Basement – Rafters & Wall



Basement – Furnace & Heater



Basement – Drain & Vents



Basement – Wall



National Center for Healthy Housing
&
National Environmental Health Association
for

*Healthy Homes Specialist Credential
Exercise*

see www.healthyhomestraining.org/credential/